

PC350-8M0 / PC350LC-8M0 SE SPEC

Hydraulic Excavators SE (Super Earth mover) Spec

Main specification

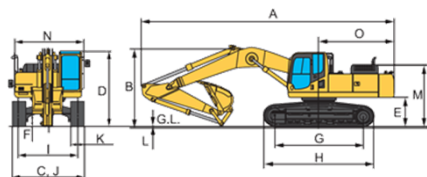
Spec.		kg	PC350LC-8M0 SE SPEC
OPERATING WEIGHT			34850
Engine	Manufacturer		Komatsu
	Model		SAA6D114E-3
	Horse power	Gross (SAE J1955)	194
		Net (ISO 9249/SAE 1349)	187
Rated rpm			1950
			6000
Boom		mm	2550
Arm		mm	1.9 Me
Bucket	Capacity	m ³	1515
	Width	mm	65.7
Ground pressure		Kpa	264
Maximum drawbar pull		kN	5.5/4.5/3.2
Maximum travel speed (High/Mid/Low)		km/h	9.5
Swing speed		rpm	37.3
Relief valve setting	Implement circuits	Mpa	37.3
	Travel circuits	Mpa	27.9
	Swing drive	Mpa	3.2
	Pilot circuits	Mpa	140x1480x100
Hydraulic cylinders (Bore x stroke x rod diameter)	Boom	mm	160x1825x110
	Arm	mm	150x1285x110
	Bucket	mm	
Service refill capacities	Fuel tank	ltr	605
	Coolant	ltr	31.0
	Engine	ltr	37.0
	Final drive, each side	ltr	9.0
	Swing drive	ltr	16.0
	Hydraulic tank	ltr	188
Arm crowd force at power max. (ISO)		kN	201
Bucket digging force at power (ISO)		kN	259

Operating weight including 6.0m boom, 2.6m arm, SAE heaped 1.9m³ Me bucket, rated capacity of lubricants, coolant, full fuel tank, operator, and same equipment.

Dimensions

Unit : mm

	2200mm Arm	2550mm Arm
A Overall length	10835	10710
B Overall height	3710	3505
C Overall width	3190	3190
D Overall height(to top of cab)	3145	3145
E Ground clearance, counterweight	1185	1185
F Ground clearance (minimum)	500	500
G Track length on ground	3700/4030	3700/4030
H Track length	4925/4960	4625/4960
I Track gauge	2590	2590
J Width of crawler	3190	3190
K Shoe width	600	600
L Grouser height	36	36
M Machine cab height	2585	2585
N Machine cab width	3090	3090
O Disatance, swing center to rear end	3405	3405

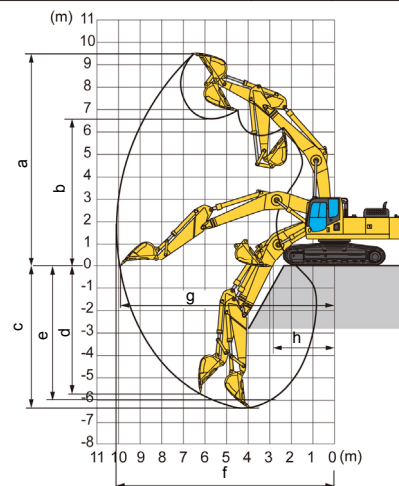


Dimensions and Working Range including 6.0m boom, 2.6m arm, SAE heaped 1.9m³ Me bucket.

Working Range

Unit : mm

	2200mm Arm	2550mm Arm
a Max. digging height	8995	9525
b Max. dumping height	6200	6575
c Max. digging depth	5955	6310
d Max. vertical wall digging depth	4640	5625
e Max. digging depth of cut for 8'level	5705	6115
f Max. digging reach	9620	10065
g Max. digging reach at ground level	9410	9860
h Min. bucket distance on ground	3210	2840



Optional Equipment



Market Development Dept. CHE201504 second edition. Electronic View Only

Materials and specifications are subject to change without notice.

KOMTRAX is a trademark of Komatsu Ltd. Japan.



Larger bucket
Larger digging force
Larger Productivity

Photo may include optional equipment.

PC350-8M0 PC350LC-8M0 SE SPEC

Hydraulic Excavators SE (Super Earth mover) Spec

KOMATSU

**Better performance
with larger-sized bucket**

**Better performance
with new SE boom**

**Work equipment
reinforcing spec**

**2.6m arm with dent
preventing plates**

2.2m arm optional

Larger bucket cylinder

$\phi 150 \times 1285 \times \phi 110 \leftarrow [\phi 140 \times 1285 \times \phi 100]$
(bore x stroke x rod diameter (mm))

• Bucket digging force at power max
259kN $\leftarrow [227\text{kN}]$ (approx. 14% up)

1.9m³ Me bucket

6.0m SE boom

**Larger bucket
Larger digging force
Larger Productivity**

Ecology and Economy Features

- High power Komatsu SAA6D114E-3 engine
- Economy mode saves fuel consumption.
- Low operation noise.

Large Comfortable Cab

- Low-noise cab
- Low vibration with cab damper mounting
- Highly pressurized cab with optional air conditioner

Safety Design

- ROPS Cab
- Anti-slip plates for work on machine

KOMTRAX (Option)

Komatsu Machine Tracking System

- Monitoring machine condition. Help your machine more effective.

Photo may include optional equipment
[] are value of 6.5m boom and 3.2m arm

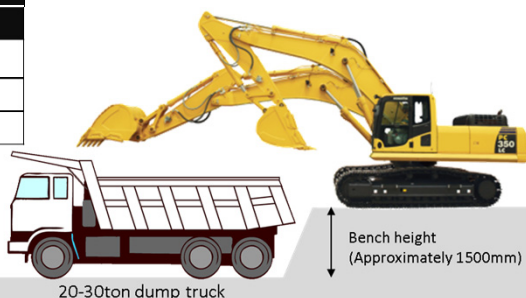
Number of loading Unit: times

	20ton dump truck	30ton dump truck
Bucket	14m ³	18m ³
1.9 m ³	8	10
2.1 m ³	7	9
2.3 m ³	6	8

《Condition》

- Calculated by volume of bucket
- Bucket fill factor = 1.0
- Calculated number of loading times are rounded off to the first decimal place

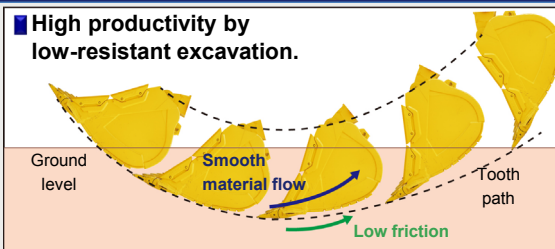
Good match to dump truck.



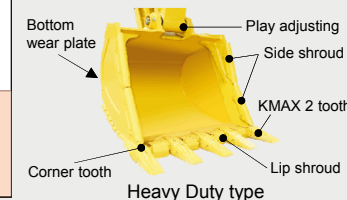
20-30ton dump truck

Me Bucket (Me : More suitable shape and Effectiveness)

**High productivity by
low-resistant excavation.**



**High durability by reinforced
structure.**



Bucket Spec

Type	Width(mm) with side shroud, tooth	capacity(m ³)	Weight (kg)	6000mm SE Boom 2550mm Arm	2200mm Arm
Heavy Duty	1560 <1514>	1.9	1830	⊙	—
	1620 <1557>	2.1	2090	○	⊙
	1750 <1687>	2.3	2200	□	○

◎ General purpose use, material density up to 1.8ton/m³

○ Light Duty work, material density up to 1.5ton/m³

□ Light Duty work, material density up to 1.2ton/m³

※ Bucket width limit (Out side of side plate): 1700mm

Hammer-less locking system

To lock and unlock, use the correct size socket to rotate the pin locking shaft 90°

